

Collects and analyzes data for insight, control and optimized productivity

# Convenience Line Software



- Products consistently meet specification
- Maximum line efficiency and equipment uptime
- Reduced operator dependency
- Reliable, fully digitized QC process
- Effective and timely order fulfillment



# Get ready for the future with data-driven processing



### Modular and easy to implement

Convenience Line Software is a modular solution that integrates effortlessly with both Marel and third-party processing equipment. It gives you the flexibility to start with a base of essential features and expand your package according to specific business needs and goals as your company grows.

### Cyber security a priority

With the threat of attacks on systems and data increasing globally, we make cyber security a priority at Marel. We ensure the Convenience Line Software is protected with security updates as required. You can also be certain that your processing is not dependent on the software and will continue to function independently if there should ever be any issues.

### A secure investment

Thanks to the control Convenience Line Software gives over processing, product recalls and costly customer claims for off-spec products can be significantly reduced. And, as a committed IT partner, we are dedicated to assisting and supporting food processors throughout the lifetime of their systems.

## Optimize production - optimize profitability

Convenience Line Software collects and analyzes data from your line to give you a complete insight into production. It lets you take complete control of the process and allows you to make informed decisions to optimize profitability.

### Maximum product consistency

Convenience Line Software makes it easy to meet the strictest product specifications by maintaining a consistent and controlled production process. It connects product and process data to provide valuable insight into processing. If there are any deviations from specifications, all necessary information is readily available to pinpoint and resolve the issues or even prevent them from happening.

### Efficient order fulfillment

Thanks to the complete overview of production and order status that Convenience Line Software provides, production schedules can be easily monitored and modified to ensure targets are met correctly and on time.

### Optimal line performance

Easy-to-read dashboards give real-time status of equipment availability and performance. This allows problems to be identified and resolved quickly and efficiently, maximizing uptime. Historical reports help identify areas for focus and to optimize overall equipment effectiveness.

### Reliable paperless QC process

Convenience Line Software fully digitizes the quality control process. It ensures data is collected accurately, stored reliably and easily accessible for evaluations, audits and recalls. Paper records are a thing of the past.



# Why choose Convenience Line Software?

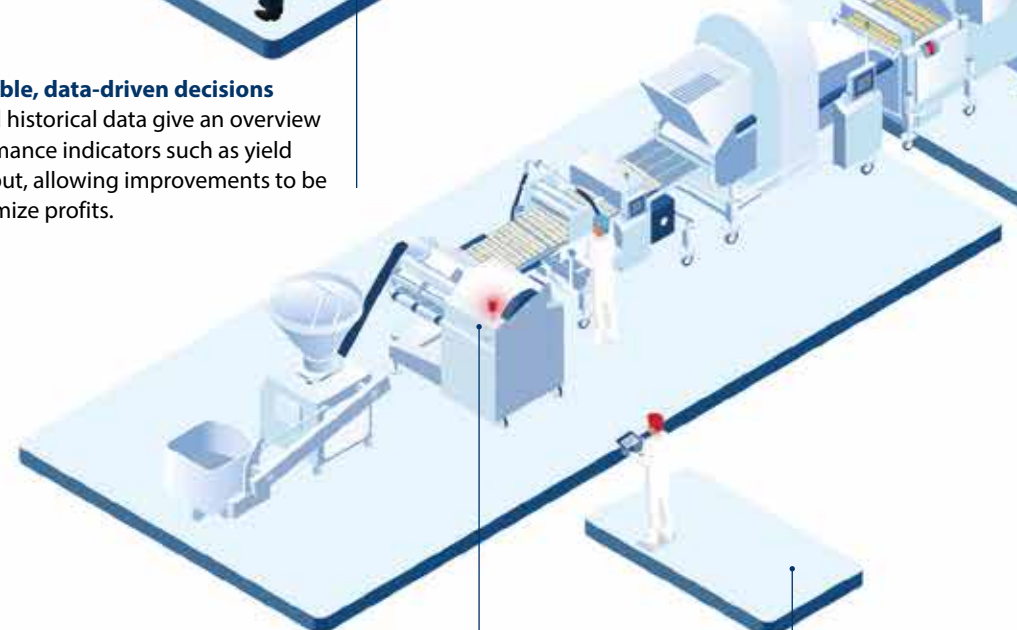
### Protect and enhance company reputation

Reliable data collection provides full traceability and ensures quality and food safety standards are consistently met. This ensures fewer complaints and recalls, ultimately protecting a company's good name.



### Make profitable, data-driven decisions

Real-time and historical data give an overview of key performance indicators such as yield and throughput, allowing improvements to be made to optimize profits.



### Maximize equipment uptime

Alarms help quickly identify equipment faults and all the information is at your fingertips to pinpoint and resolve issues or even prevent them from happening.

### Get full production overview

A complete overview of production progress and order status allows immediate action to be taken to ensure all targets are met to schedule.

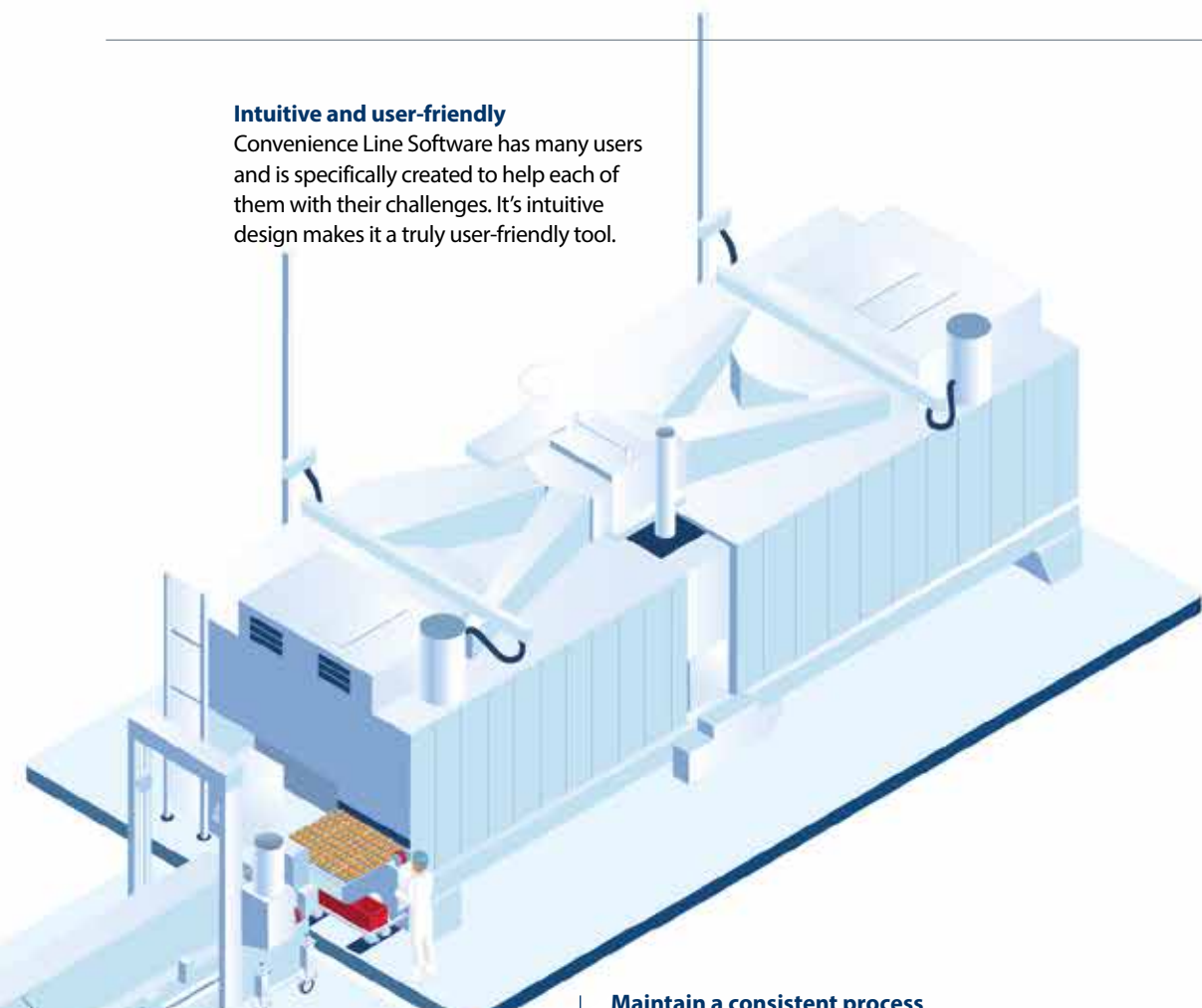


### Optimize line performance

Real-time and historical reports help identify areas for improvement to optimize overall equipment effectiveness.

### Intuitive and user-friendly

Convenience Line Software has many users and is specifically created to help each of them with their challenges. It's intuitive design makes it a truly user-friendly tool.



### Maintain a consistent process

Operators are guided through set up with precise instructions on machines, settings and ingredients, ensuring every detail is right - every time.

### Consistently meet product specs

Production can be monitored in real time to ensure product specifications for weight, temperature, color, shape etc., are continually met.



### Ensure reliable quality-control

Operators are instructed exactly when and how to take QC measurements. Data is automatically fed into the system, minimizing the risk of human error.

### Make the QC process easy & dependable

All QC data is displayed clearly, stored reliably and accessible at the touch of a button for evaluations, audits and recalls.

# What are the benefits for users?



## Line operators

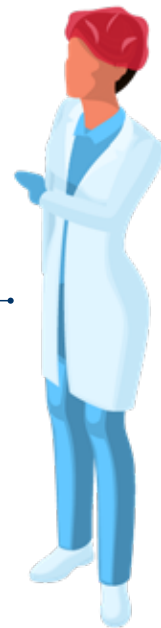
**The software guides operators through tasks to minimize human error and ensure consistency in processing.**

- Step by step instructions for line set up
- Practical guidance on programming machine settings
- Detailed directions for managing product ingredients
- Specific instruction on when and how to take QC measurements

## The Quality Manager

**The quality control process is fully digitized, ensuring data is collected accurately, stored reliably and easily accessible.**

- Easy to read run charts and dashboards give clear overview of production process and product specifications
- Data from QC measurements feeds automatically into the system
- Information is accessible at the touch of a button for QC evaluations, audits and recalls
- All data remains connected to a batch or LOT number for full traceability



## The Operations Manager

**The software provides all the data necessary to get a full overview of production. This enables any problems to be easily pinpointed and resolved, ensuring all production targets are met on time.**

- Run charts and dashboards allow easy monitoring of production progress and order status
- Early warning alarms indicate when processes run outside of settings
- Easy access to historical data allows troubleshooting to solve processing problems fast



## The Maintenance Manager

**Real-time and historical reports take the stress out of identifying problems. Issues can be solved fast or even prevented, meaning more uptime and better performance.**

- Dashboards give insight into equipment performance, taking away the guesswork when identifying issues
- Alarm reports ensure problems can be solved fast or even prevented
- Information on OEE helps identify focus areas for improvement



## The Plant Manager and the CEO

**The software provides direct insight into processing, enabling informed decisions to be made for continual improvements, such as reducing giveaway, making better use of labor and optimizing raw material use.**

- Dashboards and reports give a clear overview of KPIs, such as yield and throughput, allowing improvements to be made to optimize profits
- Dependency on operators is reduced and business continuity ensured
- Maximum control over product consistency provides certainty that customer expectations are met, resulting in fewer complaints and recalls
- Assurance is provided that all employees have the right information to do their job in the most efficient way

*TRANSFORMING FOOD PROCESSING*

